

POLYFIN[®]

THE WATERPROOFING MEMBRANE MADE OF FPO/TPO



ECOLOGICAL

FLEXIBLE

COLOURED



POLYFIN AG

Flat Roof Technology for the Future

POLYFIN[®] - THE WATERPROOFING MEMBRANE MADE OF FPO/TPO

Polyfin[®] is a high quality synthetic single ply membrane, consisting of Flexible Thermoplastic Polyolefines (FPO/TPO), which is also, from an ecological perspective, environmentally sound and superbly practical and easy to handle in installation.

The Polyfin[®] is an extremely environmentally friendly material and is also easy to install. Polyfin is a product manufactured to the highest standards of quality and is also visually attractive as it is available in a range of colors. Additionally, Polyfin is compatible with bituminous roofing and polystyrene insulation, which makes it ideal for both new construction and refurbishment projects.

Polyfin[®] is suitable for all types of flat roof construction and can be installed by various methods such as mechanical fixing or adhesive bonding. Furthermore it can be used in other structural waterproofing applications such as foundations, cellars, basements and underground car parks.

In today's market, environmental considerations and sustainability are becoming increasingly important making Polyfin[®] the ideal choice.

If you require an ecologically acceptable product, Polyfin[®] will give you everything you require as proved by our Environmental Product Declarations (EPD) made in accordance with ISO 14025 and EN 15804 published by Institut für Bauen und Umwelt e.V (IBU - Institute for Construction and Environment).

POLYFIN[®] WILL BRING YOU FURTHER ADVANTAGES TAILORED TO YOUR INDIVIDUAL REQUIREMENTS.

Ecological

The production of Polyfin[®] is completely environmentally acceptable as it incorporates no chemicals such as plasticizers, halogens and chlorides that are harmful to the environment. Polyfin[®] is an entirely PVC free product. Also in installation on the roof, the hot air welding of the seams releases no toxic or dangerous substances. Furthermore no solvents are required for preparing the welds. For green roofs there is a further advantage that Polyfin[®] is fully root and rhizome resistant, so requires no further root resistant additive. Polyfin[®] has been tested for this application in accordance with the FLL Testing Standards. As Polyfin is inert, it does not react with other materials, it can be safely used for potable water applications in accordance with the KTW Guidelines. It has been tested and approved by an accredited institute.

Flexible

Because Polyfin[®] is so flexible, it is ideal for use on complex roofs as it can be formed to almost any shape. As Polyfin has good expansion characteristics, it can accommodate all building movements due to thermal expansion and contraction.

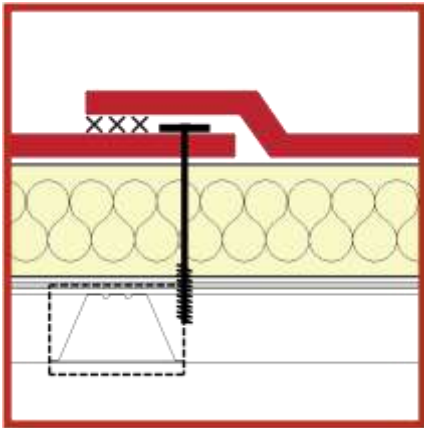
Coloured

Polyfin[®] is not only due to its product features very flexible, but also gives you a lot of leeway with your work. In addition to our standard colors we offer a wide range of special colors. This opens up many new opportunities for you in designing your projects.

BITUMEN AND POLYSTYRENE COMPATIBLE • ROOT RESISTANT TO FLL-TESTING METHOD • TESTED RESISTANCE TO FLYING SPARKS AND RADIANT HEAT FOR CONVENTIONAL ROOF STRUCTURES • SIMPLE INSTALLATION AND HANDLING • NO SUBSEQUENT SEALING OF THE SEAM EDGES REQUIRED

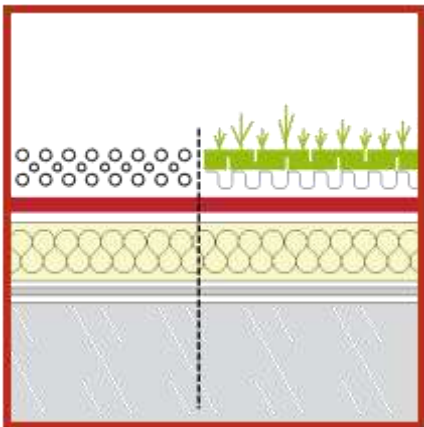
CONVINCE YOURSELF OF THE MANY POSSIBLE APPLICATIONS OF POLYFIN®

ECONOMICAL SOLUTIONS FOR EVERY ROOF BUILD UP



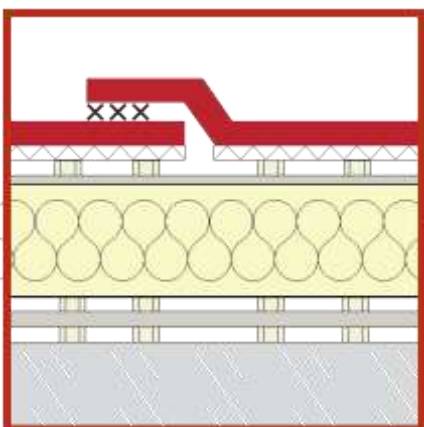
MECHANICALLY FASTENED

Polyfin® 3020
Polyfin® 3018
Polyfin® 3016
Polyfin® 4230



LOOSE LAID AND BALLASTED

Polyfin® 3020
Polyfin® 3018
Polyfin® 3016
Polyfin® 4230



BONDED APPLICATION

Polyfin® 4230 (stripwise or fully bonded)
Polyfin® 5028 SK (fully self-adhesive bonded)
Polyfin® 5024 SK (fully self-adhesive bonded)



SAVE TIME – MAKE EVERY DAY WORK MORE EFFICIENTLY WITH POLYFIN® SK

In addition to our standard range of Polyfin® products, we also have Polyfin® SK waterproofing membrane, which is self-adhesive on the underside. Polyfin® SK allows you to proceed faster with the installation because:

- a) The membrane can easily be rolled out and aligned.
- b) Laying and bonding takes place in one single operation.
- c) A separate adhesive application is not required so there is no time lost waiting for adhesives to dry.
- d) It can be used on steep or vertical surfaces.

You can rely on Polyfin® SK! Polyfin® SK comes with an adhesive free salvage edge which facilitates a homogenous hot air seam weld. Polyfin® SK is user friendly, adaptable and easy to install. Polyfin® SK is also ideal for installing flashings. Vertical flashings up to 50 cm high can be installed without the use of time consuming mechanical fixings.

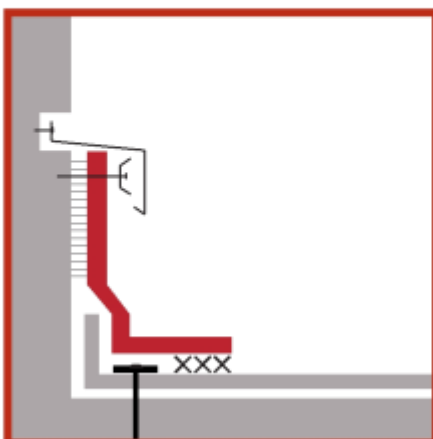
Save up to
50% working

There are three simple stages in the installation:

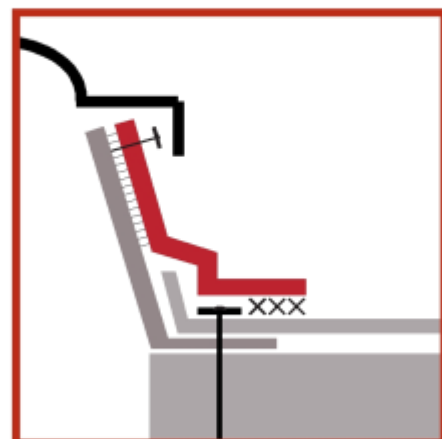
- 1) Roll out and align the membrane.
 - 2) Remove the peel off backing foil and apply pressure to adhere the membrane to the substrate.
 - 3) Roll out the adjacent sheet, align it and carry out the hot air seam welding.
-

APPLICATION EXAMPLES

WALL FLASHING



FLASHING TO ROOF LIGHT



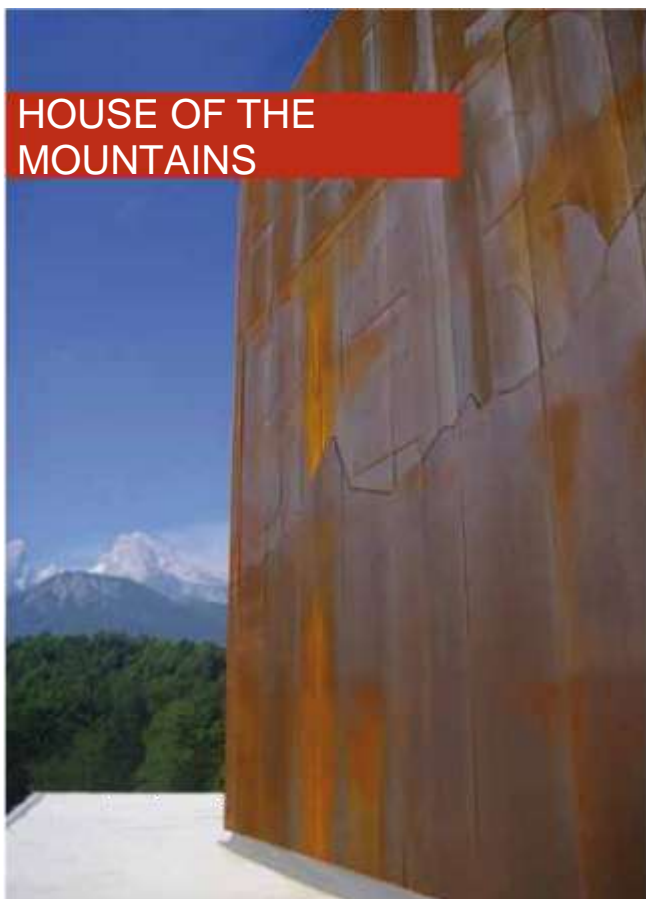
EUROHUB FRANKFURT



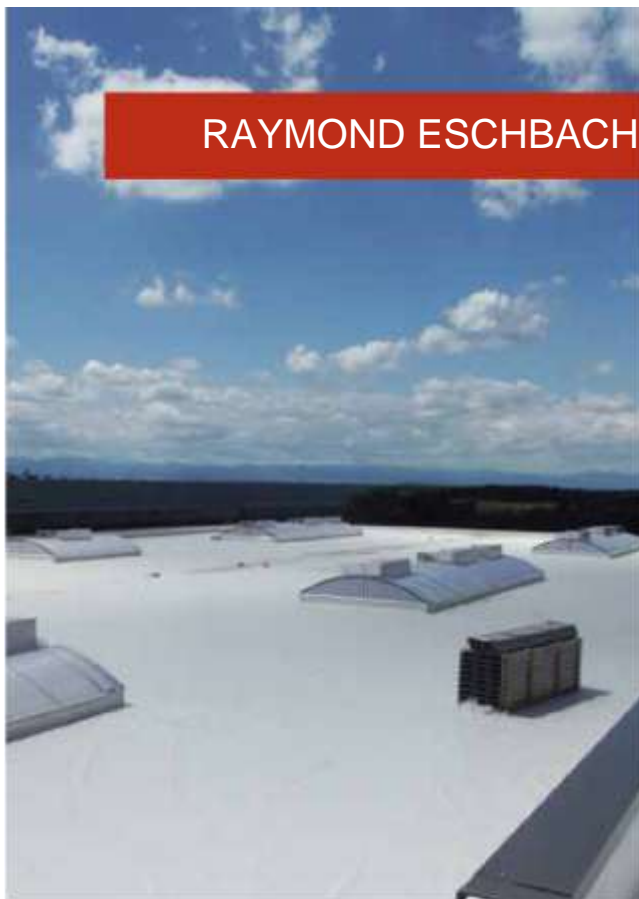
SCHILLER SCHOOL WALLDORF



HOUSE OF THE MOUNTAINS



RAYMOND ESCHBACH



PHÖNIX PFENNING HEDDESHEIM



Technical data Standard - not laminated	Polyfin® 3020 glass fleece reinforced	Polyfin® 3018 glass fleece reinforced	Polyfin® 3016 glass fleece reinforced
Loose laid with ballast incl. green roof	●	●	●
Loose laid and mechanically fixed	●	●	●
Strip bonded (partially)	—	—	—
Fully bonded	—	—	—
Fully self-adhesive bonded	—	—	—
Total thickness in mm	2.0	1.8	1.6
Width in mm	2100 / 1500 / 1050 / 750 525 / 350 / 250	2100 / 1500 / 1050 / 750 525 / 350 / 250	2100 / 1500 / 1050 / 750 525 / 350 / 250
Length per roll in m	20	20	20

Technical data Laminated or self-adhesive coating	Polyfin® 4230 glass fleece reinforced and bottom sided fleece backed, fleece free welding edge on one side	Polyfin® 5028 SK glass fleece reinforced, bottom sided self-adhesive coating, welding edge without coating on both sides	Polyfin® 5024 SK glass fleece reinforced, bottom sided self-adhesive coating, welding edge without coating on both sides
Loose laid with ballast incl. green roof	●	—	—
Loose laid and mechanically fixed	●	—	—
Strip bonded (partially)	●	—	—
Fully bonded	●	—	—
Fully self-adhesive bonded	—	●	●
Total thickness in mm	3.0	2.8	2.4
Width in mm	2100 / 1050 / 525	1050	1050
Length per roll in m	20	15	15

